

Lesson #128

1.

8.EE.8

$(25, -5)$

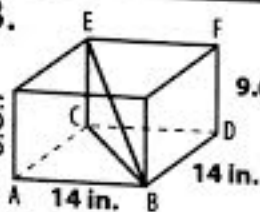
2.

8.F.4

$d = 15s + (3.89 \times 10^9)$

3.

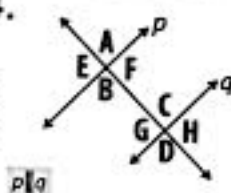
8.G.7



length of $\overline{CB} = 19.8$ in.
length of $\overline{EB} = 22$ in.

4.

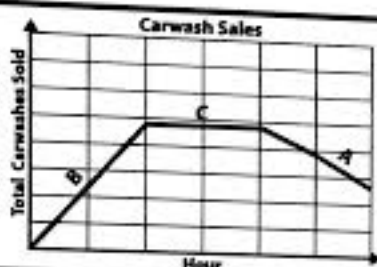
8.G.5



$\angle A$ and $\angle D$
 $\angle E$ and $\angle H$

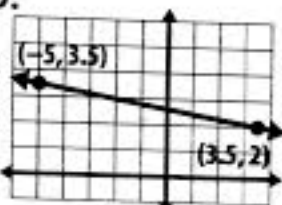
5.

8.F.5



6.

8.G.8



The distance
is 8.63
units.

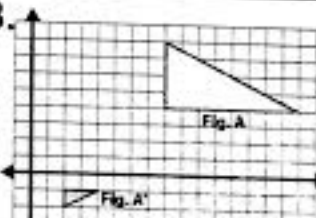
7.

8.SP.4

	Gum	No Gum	Total
Chocolate	6	11	17
No Chocolate	8	2	10
Total	14	13	27

8.

8.G.4



similar;
reflected,
dilated by
scale factor
of 0.25

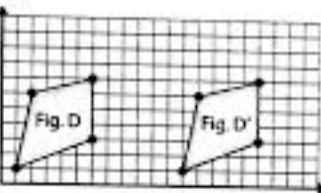
9.

8.EE.7

$t = \text{any value}$
infinite solutions

10.

8.G.3

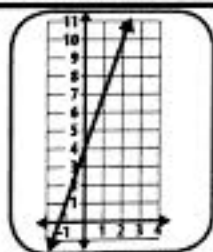


horizontal
change
+11
vertical
change
0

11.

8.F.2

$y = x + 5$



12.

8.EE.4

1.0206×10^1