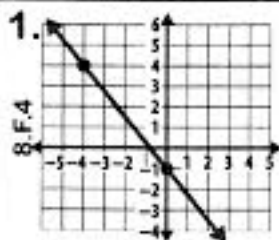


## Lesson #124



slope is  $-\frac{5}{4}$   
 y-intercept is  $-1$   
 $y = -\frac{5}{4}x - 1$

8.F.4

2.

8.SP.4

	In Band	Not In Band	Total
Boys	43	239	282
Girls	57	221	278
Total	100	460	560

3.

8.F.2

A)  $y = 2x + 8$

B)  $y = x + 19$

8 is the smaller y-intercept.

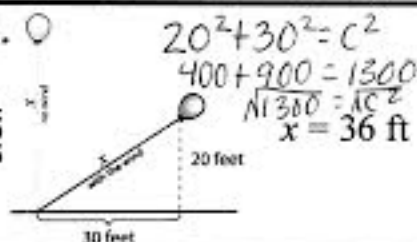
4.

8.EE.4

$1.5 \times 10^{13} - 2.57 \times 10^{11}$   
 $1.5 \times 10^{13} - .0257 \times 10^{13}$   
 It has increased by  
 $1.4743 \times 10^{13}$  dollars.

5.

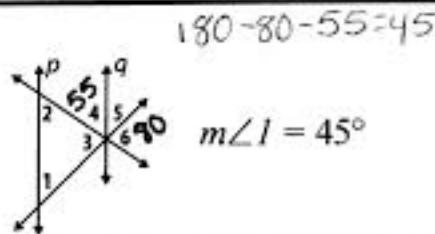
8.G.7



6.

8.G.5

8.EE.7



7.

8.F.1

B

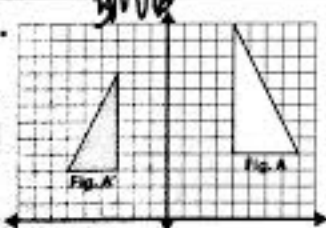
8.

8.EE.7

$t = -4$

9.

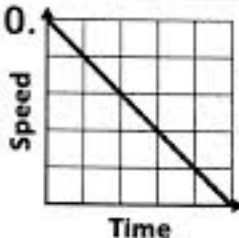
8.G.4



similar;  
 reflected,  
 dilated by  
 scale factor  
 of 0.75

10.

8.F.5

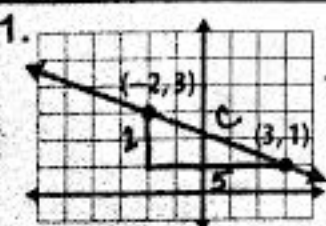


A) decreases

B) linear nonlinear

11.

8.G.8



The distance  
 is 5.39 units.

12.

8.SP.1

A) As the number of games played increases, the number of points scored decreases.

B) As more games are played, more points are scored.

C) The amount of games played does not have an effect on the number of points scored.