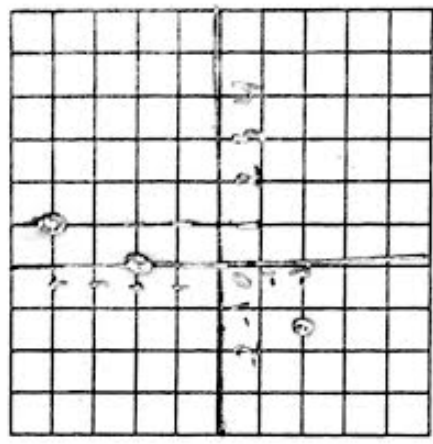


Check Understanding

1. Graph this set of points: $(-1.5, -2), (0, 2), (1, 4), (2, 6)$. Which model is most appropriate?

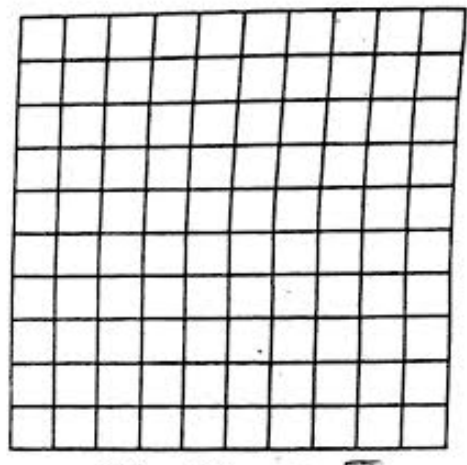
linear
 $y = mx + b$



2. Which kind of function best models the data in the table? ~~Linear~~ ~~Quadratic~~ ~~Cubic~~ ~~Exponential~~

exponential
 $4.4 \div 4 = 1.1$
 $4.84 \div 4.4 = 1.1$
 $5.324 \div 4.84 = 1.1$
 $5.8564 \div 5.324 = 1.1$

x	y
0	4
1	4.4
2	4.84
3	5.324
4	5.8564



3. The profits of a small company are shown in the table at the right